

# Decking Installation Guide

## Starting your project

Following delivery of your composite decking boards, we recommend you allow them 24 hours to adjust to local temperature conditions before starting work. We do not recommend installing your deck in temperatures below 5°C. Your composite decking boards can be worked with normal woodworking tools. We recommend using a wood saw (hand or power) with a fine-tooth blade to cut boards to size. When cutting, care should be taken to ensure that boards are properly supported to prevent splitting. We recommend using an off-cut of composite decking when using a new cutting or drilling method to ensure the desired outcome is achieved.

As with other building work it is important to work safely and to take suitable safety precautions including the wearing of personal protective equipment (PPE) relevant to the task.

Before starting any construction project please ensure that you have consulted with your Local Authority planning department to ensure there are no restrictions on the proposed installation.

## Preparing the Supporting Structure

Ensure the area for your decking installation is flat and free from obstructions. Composite Decking boards must not be laid directly on the ground but should be fixed to suitable timber post and joists arrangement providing a suitable supporting sub-structure. This will vary, from installation and if in doubt you should seek expert advice from a suitably qualified professional e.g. a structural engineer, architect, experienced builder.

If the decking is to be installed in an external location, the timber base should have a gradient of approximately 1 in 80 to ensure that any rainwater runs away from the property and prevents a build-up of water on your new deck.

The maximum recommended space between your timber joists should typically never exceed 400mm. We recommended that you install 6 clips per 2.2m board, approximately 1 clip every 366mm, ensuring the board end finishes on the centre of the joist with no overhang.

## Fixing Decking Boards to Joists

An 8mm gap should be left between the ends of decking boards and a 10mm gap between boards and fixed object such as a wall, this will provide adequate drainage and allow for thermal expansion.

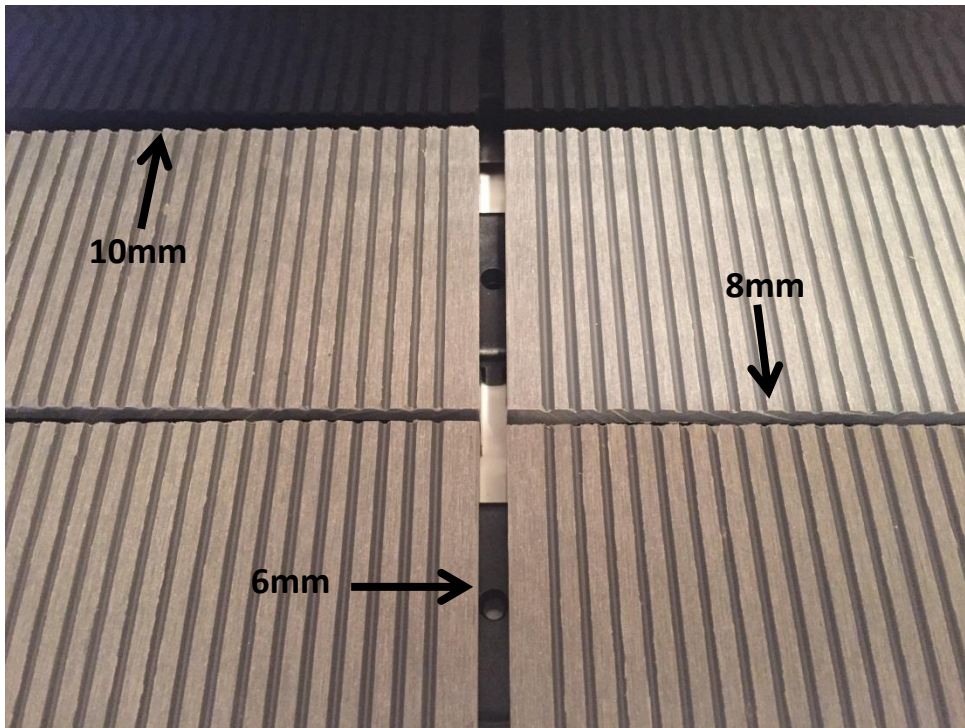


Figure 1 spacing

Our composite decking boards are easily fastened to the timber joists of a supporting sub-structure with the help of our stainless-steel screw and plastic T-Clip system. We recommended that a gap of at least 6mm is maintained between the sides of adjacent boards to allow for drainage and thermal expansion. The use of plastic T-Clips helps ensure these gaps are maintained.

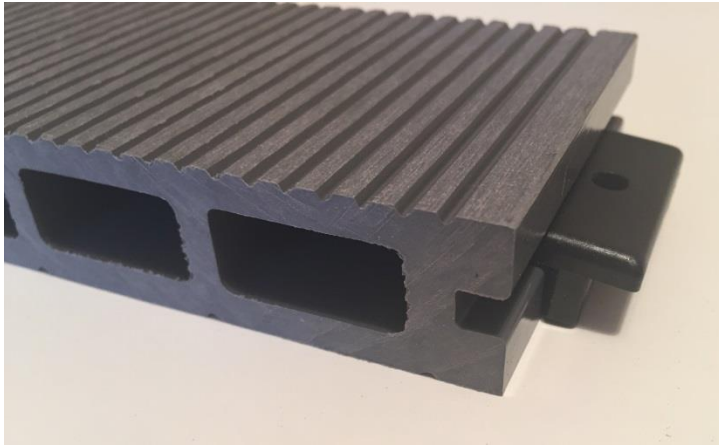


Figure 2 T Clip

Start on the outside edge of the installation area to be decked. Position the first starter clip and screw it into each joist it crosses with a countersunk decking screw of suitable length.



Figure 3 Starter Clip

Next fit the T-clips into the groove along the side of the board and fix by screwing them into each supporting joist with the screws provided, one T-Clip for each supporting joist.

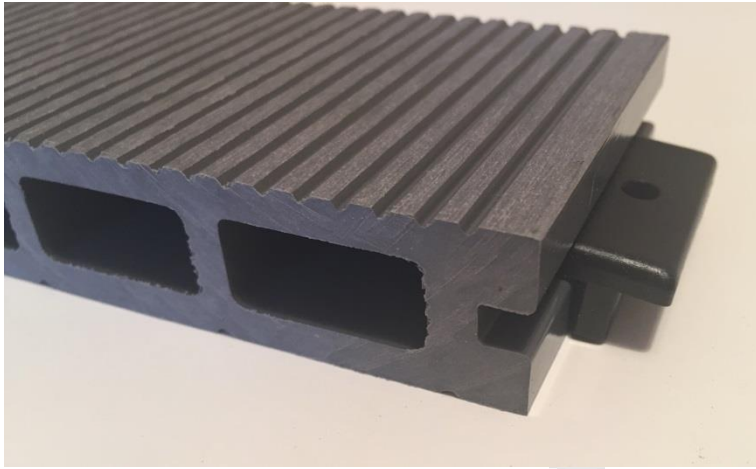


Figure 4 Securing T clip

Fit your next board by sliding it onto the T-Clips used to secure the first board and fitting another set of T-Clips to secure the opposite side of the board, again one T-Clip for each supporting joist. Follow a similar process to fix subsequent boards attaching the final board in a similar manner to your first.

The ends of all boards must be fully supported. No overhang is permitted and at butt joints where the ends of two decking boards meet this may mean installing additional supporting joists.

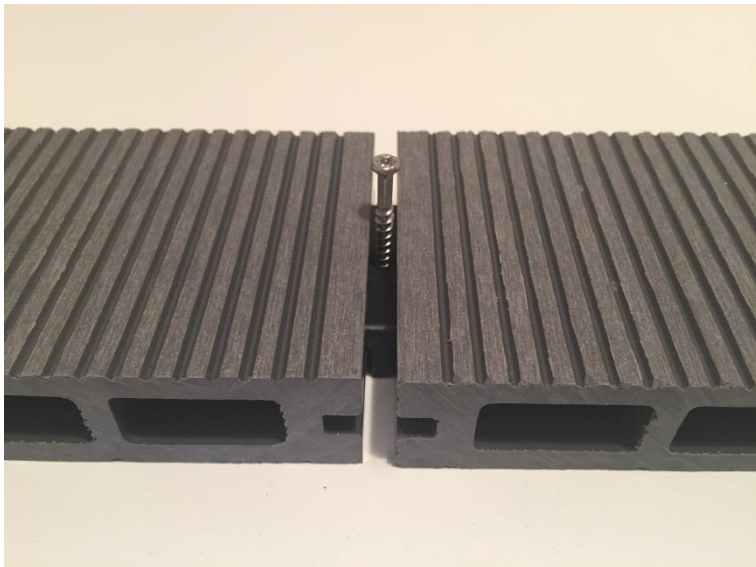


Figure 5 Screw

Our T-Clips come with stainless steel screws with T15 torx head and we provide a screw bit to ensure you have everything you need to install your new decking boards.

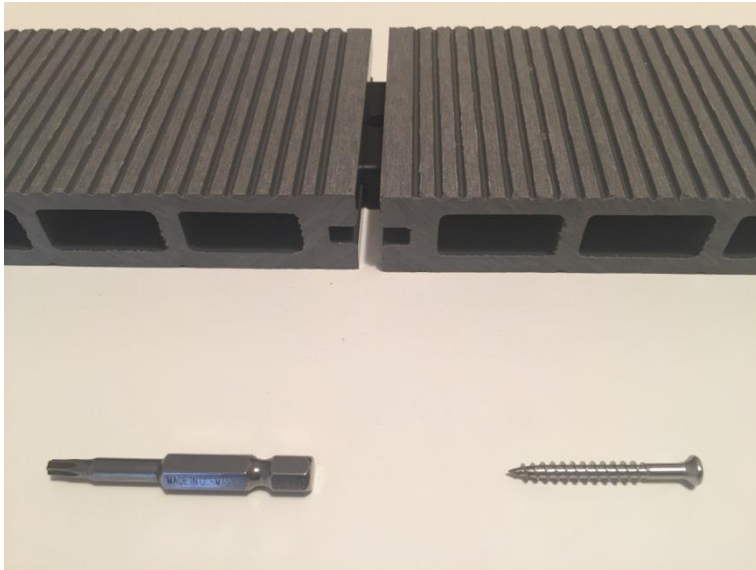


Figure 6 T15 trox head

## Adding the Finishing Touches

The final job is to complete the sides or fascia of your new deck, this can be achieved by using our colour matched composite skirting, L shaped corner trims or for larger areas you could turn a full board on its side. These methods can be used to hide the unfinished end of boards and supporting joists. We recommend that you do not fully close your deck to allow for the free circulation of air and drainage.

The skirting trims can be screwed directly into timber joists with pre-drilled holes and secured by a suitable grab adhesive available from DIY stores. Never screw directly in to composite products and always ensure to pre-drill holes before screwing to ensure the product does not split. A gap of at least 8mm should be maintained between skirting trims and the ends and sides of boards to allow for thermal expansion.

Corner trims can be applied after skirting trims to achieve a finishing touch by securing them directly to the decking boards with a suitable grab adhesive.

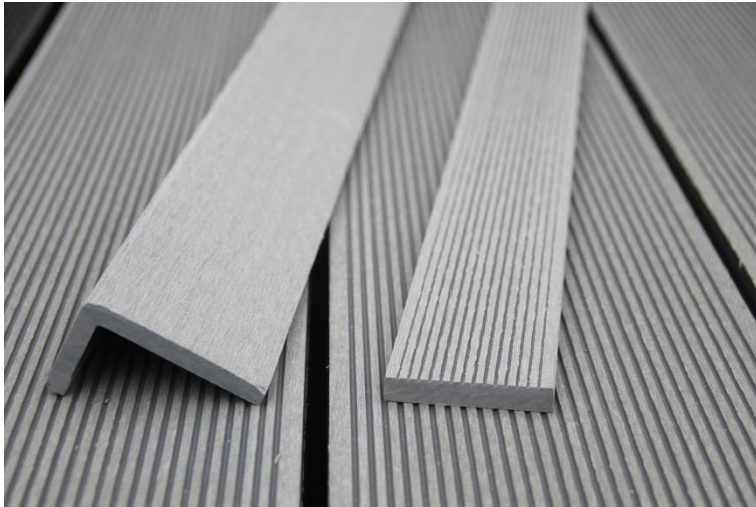


Figure 7 L Corner trim and Fascia

If in doubt - please get in touch and we will be happy to offer you further advice!

### Product notes

#### Colour Variations

ReDeck composite decking boards are produced in batches. As they contain natural recycled timber, there may be slight variations in colour. We advise purchasing decking boards in the same lengths to avoid initial colour difference. Please ensure you order the correct amount of boards on the initial order.

#### Water Stains

Water stains from wood tannins can occur in the early life of your deck as the natural tannins come out of the wood fibres at the surface of the composite decking. This will happen in the early weeks of your deck and will depend on how exposed to the elements your deck is before the weathering process is complete. These stains will disappear naturally over time and once the product has been wet and dry several times unless, of course, you have a recurring problem that allows water to continually land on to the composite decking. We recommend you allow the boards to weather naturally over time. However, if you would like to remove the marks



yourself then wash with clean, hot water. We do not recommend you do this whilst the deck is hot.

### Scratching

The machined finish and embossed pattern on the surface of ReDeck decking is designed to hide most minor scratches. When moving furniture or heavy items across your deck take extra care as this may lead to significant scratches on the deck surface. We recommend using a protective mat or furniture pads to prevent contact from items such as furniture legs, BBQ's or planter stands. Larger scratches can be removed by lightly sanding the face of the board. Please note that over sanding of your deck boards can remove the embossed pattern.

\*Note, the woodgrain side of our RD15/RD151 boards may be subject to wear of the pattern on high traffic areas

**Please refer to our care and maintenance guide for further information on how to care for your deck.**

A large, faint, light-grey version of the ReDeck logo and text is centered in the background of the page. It includes the stylized 'A' icon, the word 'ReDeck', and the words 'Composite Solutions' below it.

ReDeck  
Composite Solutions